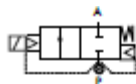




SOLENOID VALVES

2/2 WAY PILOT OPERATED SOLENOID VALVE



normally closed

TYPE: D223/224/225

TECHNICAL SPECIFICATIONS

Media: water, oil, air
 Media temperature: $-10^{\circ}\text{C} \div +90^{\circ}\text{C}$
 Ambient temperature: $-10^{\circ}\text{C} \div +50^{\circ}\text{C}$
 Body material: brass (CW617N EN 12165)
 Operator material: stainless steel
 Operator seal material: NBR
 Seal and diaphragm material: NBR
 Coil power: AC 18VA (holding)
 AC 36VA (inrush)
 DC 14W
 Protection class: IP 65 (with connector)
 Speed control screw as standard

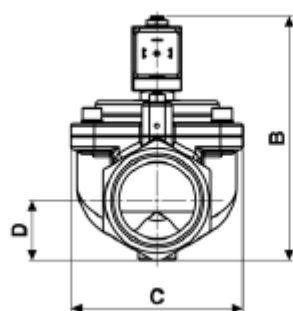
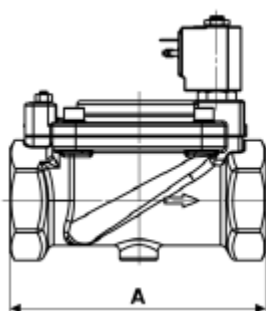
OPTIONS

Normally open (e.g. code **D224DBK**) with coils class "H" only
 Manual override (e.g. code **D223DBKM**)
 EPDM seal for air and hot water MAX 120°C (e.g. code **D223DEK**)
 FKM seal for air, water, oil MAX 130°C (e.g. code **D223DYK**)
 EEX proof version (please see page 43 for more information)



VALVE	G connection	nominal diameter	flow rate Kvs	min	OPD max AC	max DC
code	[ISO 228 G]	[mm]	[l/min]	[barg]	[barg]	[barg]
D223DBK	1 1/4"	40	370	0.5	16	16
D224DBK	1 1/2"	40	400	0.5	16	16
D225DBJ	2"	50	540	0.5	16	16

COILS	
code	[Volts/Hz]
7250	24v DC
7200	24v 50/60Hz
7400	110v 50Hz - 120v 60Hz
7600	200v 50Hz - 220v 60Hz
7700	230v 50Hz - 240v 60Hz



DIMENSIONS & WEIGHTS

G connection	A	B	C	D	weight
[ISO 228 G]	[mm]	[mm]	[mm]	[mm]	[kg]
1 1/4"	140	140	96	31	2.8
1 1/2"	140	140	96	31	2.8
2"	168	158	112	39	3.9