

Main Features :-

Valve Features:	Actuator Features:
SS 316 3 way Ball Valve	On Off, Failsafe, Modulating
Full Bore	IP67 Housing
L port or T port	Manual Override
PN16 Rated	Limit Switches
-20 to + 180C Temp Range	100% Function Tested
Available Screwed	Quality Assembled Products



TYPE: 907E ELECTRIC

Overview:-

We typically offer 3 options on electric actuators. We have 3 core brands that we offer depending on what the application demands. The brands we offer and stock are:



- a plastic housed electric actuator series offering multi voltage 24-240VAC/DC and on off, failsafe, modulating and modulating failsafe functionality.



an aluminium housed quarter turn actuator with CSA and Nema 4x approval. Available on off and modulating.

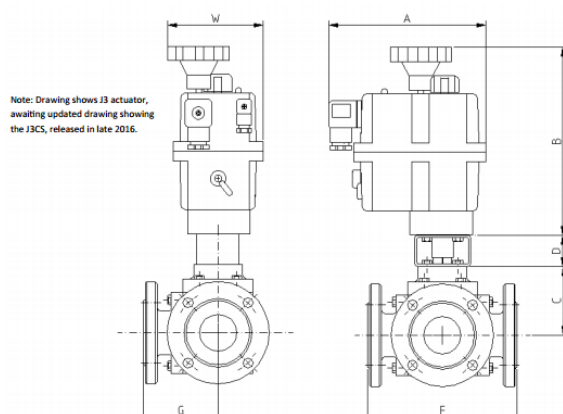


- A compact basic or smart series range offering a compact sized electric actuator but with big features including on off, modulating, failsafe, modulating failsafe, speed control and BUS communication.



Key Dimensions:-

* Note that the following dimensional drawing is a generic drawing for demonstration purposes only. The dimensions relevant to the different actuator are on the right hand side.

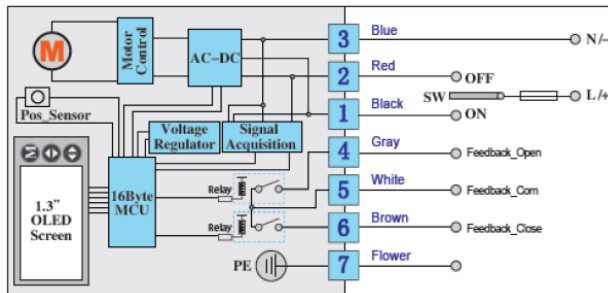


*For low or high temperature applications, please add minimum 50mm height (Dimension F) for SS bracket to protect actuator from low or high temperatures.

	J+J	Sun Yeh	AVA
Size	F	H	Kg
1/4"	call	call	call
3/8"	call	call	call
1/2"	call	call	call
3/4"	call	call	call
1"	call	call	call
1 1/4"	call	call	call
1 1/2"	call	call	call
2"	call	call	call

All of our actuators are typically 3 wire actuators, offering a neutral and switchable live. See below for specific wiring options. Call if you have a specific requirement as in particular the Sun Yeh and AVA brands have multiple factory made options available. For example, the AVA units are available as a 2 wire option where replacing a solenoid valve for example.

Wiring Options:- AVA Series

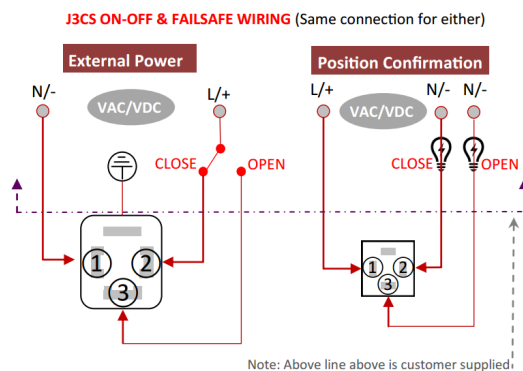


AVA electric actuators are supplied with a flying lead, models 20 only. Models 60 and above have terminal strip. No need to remove actuator housing to wire. See specific actuator model for exact wiring details.



TYPE: 907E ELECTRIC

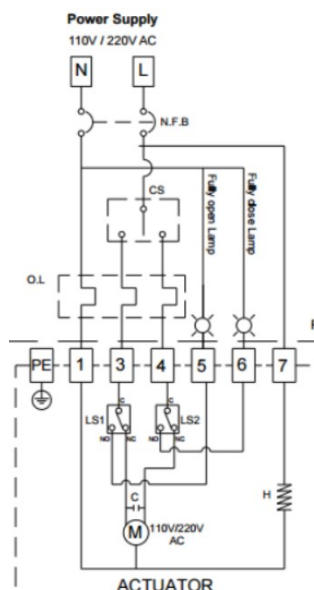
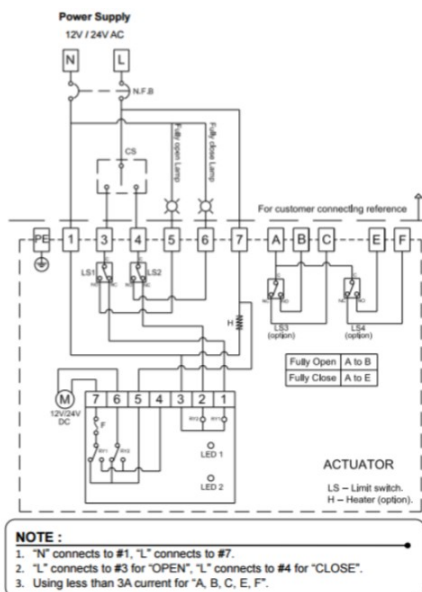
Wiring Options:- J+J Series



In J+J electric actuators, all electrical connections are made externally using the external DIN plugs supplied with the actuator. There is no need to remove the valve actuator's cover to connect electrically. See specific actuator model for exact wiring details.



Wiring Options:- Sun Yeh Series



The Sun Yeh range of actuators requires the cover to be removed to wire the actuator electrically. All actuators from our stock have M20 conduit entry for cables (glands not included). See specific actuator model for exact wiring details.



SUNYEH

ISO 9001:2015 Accredited Company

Tel: +44(0)1386 552369

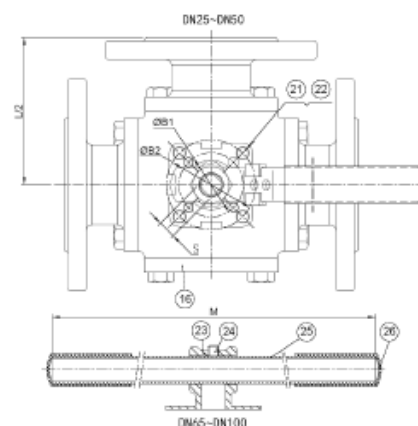
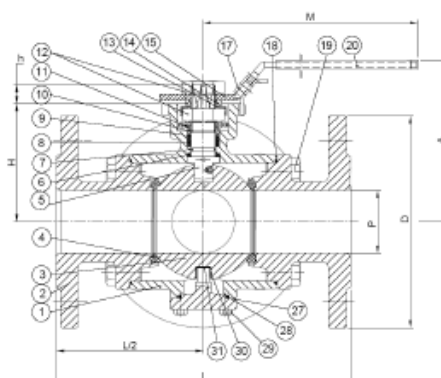
Fax: +44(0)1386 554227

sales@allvalves.co.uk

www.allvalves.co.uk

Allvalves Online Ltd, Automation House, Unit 2, Pershore, WR10 2DF UK

Valve Additional Information:-



TYPE: 907E ELECTRIC

Nº	Denominación / Name	Material	Acabado Superficial / Surface Treatment	Cód. Recambio Spare Part Code
1	Cuerpo / Body	Acero Inox. / Stainless Steel 1.4408	Granallado / Shot blasting	-----
2	Tapa / Cap	Acero Inox. / Stainless Steel 1.4408	Granallado / Shot blasting	-----
3*	Bola / Ball	Acero Inox. / Stainless Steel 1.4408	-----	B2540
4*	Asiento / Ball Seat	PTFE + 15% FV / PTFE + 15% FG	-----	2928
5	Eje / Stem	Acero Inox. / Stainless Steel AISI 316	-----	-----
6*	Anillo Fricción / Thrust washer	PTFE	-----	2928
7*	Tórica / O' ring	FKM (Viton)	-----	2928
8*	Empaquetadura / Stem packing	PTFE	-----	2928
9*	Casquillo / Bushing	Inox. + PTFE / S.S. + PTFE	-----	2928
10	Anillo Prensa / Gland	Acero Inox. / Stainless Steel AISI 316	-----	-----

Nº	Denominación / Name	Material	Acabado Superficial / Surface Treatment	Cód. Recambio Spare Part Code
11	Arandela Resorte / Spring Washer	Acero Inox. / Stainless Steel AISI 301	-----	-----
12	Tuerca vástago / Stem Nut	Acero Inox. / Stainless Steel AISI 304	-----	-----
13	Antigiro / Nut Locker	Acero Inox. / Stainless Steel AISI 304	-----	-----
14	Arandela / Washer	Acero Inox. / Stainless Steel AISI 304	-----	-----
15	Maneta / Handle (DN25-DN50)	Acero Inox. / Stainless Steel AISI 304	-----	-----
16	Tapa ciega / End Cap	Acero Inox. / Stainless Steel 1.4408	Granallado / Shot blasting	-----
17	Bloqueo maneta / Lock device (DN25-DN50)	Acero Inox. / Stainless Steel AISI 304	-----	-----
18*	Junta / Gasket	PTFE	-----	2928
19	Tornillo / Bolt	Acero Inox. / Stainless Steel AISI 304	-----	-----
20	Funda / Handle Sleeve	Vynil	-----	-----
21	Tornillo Tope / Stop Bolt	Acero Inox AISI 304 / SS 304	-----	-----
22	Tuerca / Nut	Acero Inox AISI 304 / SS 304	-----	-----
23	Adaptador Maneta / Handle Adapter (DN65-DN100)	Acero Inox AISI 304 / SS 304	Granallado / Shot blasting	-----
24	Tornillo / Bolt	Acero Inox AISI 304 / SS 304	-----	-----
25	Maneta / Handle	ASTM A 53	Cincado / Zn Plated	-----
26	Funda / Handle Sleeve	Vynil	-----	-----
27	Tapa Inferior / Bottom Cap	Acero Inox AISI 316 / SS 316	Granallado / Shot blasting	-----
28*	Junta / Gasket	PTFE	-----	2928
29	Tornillo / Bolt	Acero Inox AISI 304 / SS 304	-----	-----
30*	Casquillo / Bush	PTFE	-----	2928
31*	Disco / Disk	PTFE	-----	2928

ISO 9001:2015 Accredited Company

Tel: +44(0)1386 552369

Fax: +44(0)1386 554227

sales@allvalves.co.uk

www.allvalves.co.uk

Allvalves Online Ltd, Automation House, Unit 2, Pershore, WR10 2DF UK

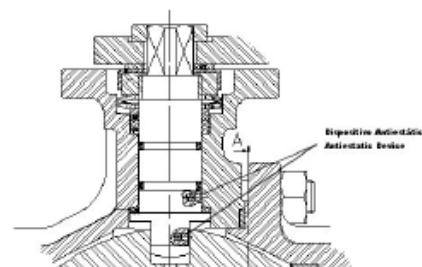
Valve Additional Information:-

DIMENSIONES GENERALES / GENERAL DIMENSIONS

Ref.	Medida/ Size	PN	P	Dimensiones/Dimensions (mm)							ISO 5211 (ØB1/B2)	Peso / Weight (Kg)
L	ØD	H	A	M	S	h						
2540 06	1"	40	25	180	115	68	99	175	11	11	F04/F05	8,600
2540 07	1 ¼"	40	32	190	140	72	103	175	11	11	F04/F07	11,800
2540 08	1 ½"	40	38	212	150	85	119	200	14	14	F05/F07	14,700
2540 09	2"	40	49	230	165	92	126	200	14	14	F05/F07	19,700
2540 10	2 ½"	16	63	290	185	107	172	400	17	17	F07/F10	33,300
2540 11	3"	16	75	310	200	119	187	400	17	18	F07/F10	47,100
2540 12	4"	16	99	350	220	150	214	400	22	22	F10	73,700

Dispositivo Antiestático / Anti-static Device

Este dispositivo nos garantiza la continuidad eléctrica entre esfera - eje - cuerpo, esto es de especial necesidad en fluidos inflamables / *This device ensures the electrical continuity between Ball - Stem - Body, this is of special need in flammable fluids.*



Configuraciones de flujo para válvula de tres vías "L - PORT " giro 90°/ *Flow Patterns for "L-PORT " 3 way valves 90° turn.*



L-PORT 90° TURN

VALORES DE Kv / Kv VALUES

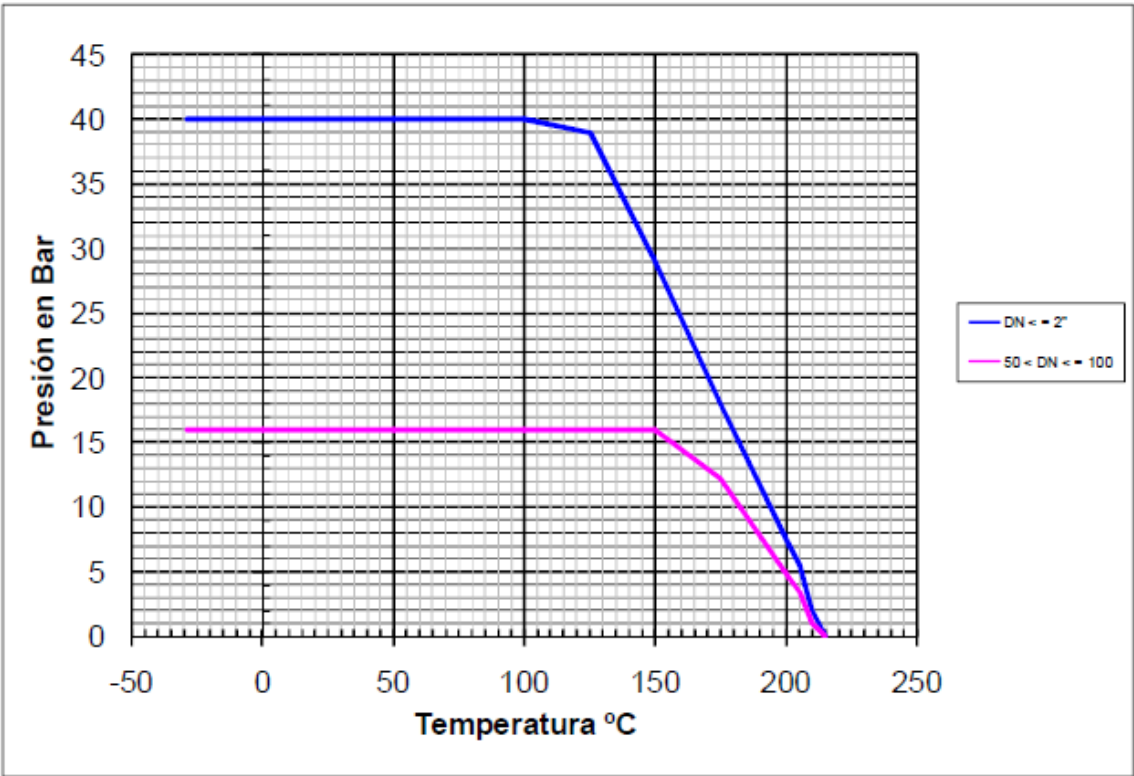
Kv (m³/h) = Es la cantidad de metros cúbicos por hora que pasará a través de la válvula generando una pérdida de carga de 1 bar.

Kv (m³/h) = Flow rate of water in cubic meter per hour that will generate a pressure drop of 1 bar across the valve.

1"	1 ¼"	1 ½"	2"	2 ½"	3"	4"
39	50	96	192	264	351	653

Valve Additional Information:-

CURVA PRESIÓN TEMPERATURA / PRESSURE TEMPERATURE RATING



TYPE: 907E ELECTRIC