

Actuated Valves - Series 910E

Electrically Actuated SS Jacketed Wafer Ball Valves



Main Features :-

Valve Features:	Actuator Features:
1/2" to 4"	On Off, Failsafe, Modulating
Stainless Steel 316	IP67 Housing
RPTFE seats	Manual Override
Viton Seals	Limit Switches
PN16 Rated	100% Function Tested
ISO Pad	Quality Assembled Products



TYPE: 910E ELECTRIC

Overview:-

We typically offer 3 options on electric actuators. We have 3 core brands that we offer depending on what the application demands. The brands we offer and stock are:



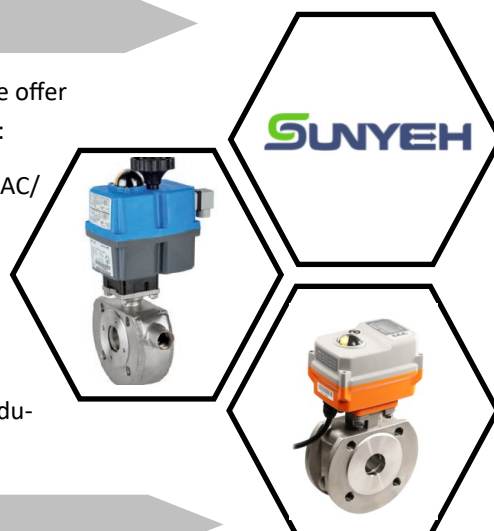
- a plastic housed electric actuator series offering multi voltage 24-240VAC/DC and on off, failsafe, modulating and modulating failsafe functionality.



an aluminium housed quarter turn actuator with CSA and Nema 4x approval. Available on off and modulating.

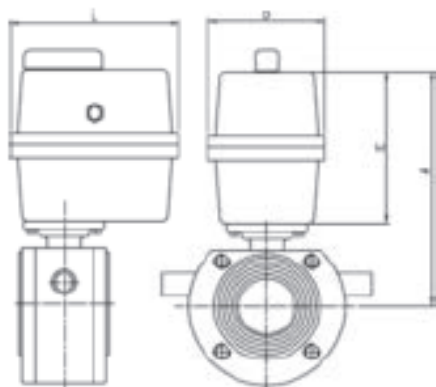


- A compact basic or smart series range offering a compact sized electric actuator but with big features including on off, modulating, failsafe, modulating failsafe, speed control and BUS communication.



Key Dimensions:-

* Note that the following dimensional drawing is a generic drawing for demonstration purposes only. The dimensions relevant to the different actuator are on the right hand side.



*For low or high temperature applications, please add minimum 50mm height (Dimension F) for SS bracket to protect actuator from low or high temperatures.

	J+J	Sun Yeh	AVA
Size	F	H	Kg
1/4"	Call	Call	Call
3/8"	Call	Call	Call
1/2"	Call	Call	Call
3/4"	Call	Call	Call
1"	Call	Call	Call
1 1/4"	Call	Call	Call
1 1/2"	Call	Call	Call
2"	Call	Call	Call

ISO 9001:2015 Accredited Company

Tel: +44(0)1386 552369

Fax: +44(0)1386 554227

sales@allvalves.co.uk

www.allvalves.co.uk

Allvalves Online Ltd, Automation House, Unit 2, Pershore, WR10 2DF UK

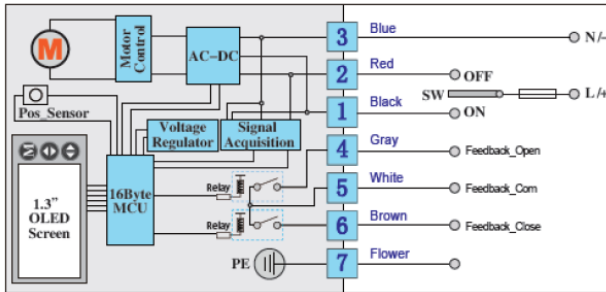
Actuated Valves - Series 910E

Electrically Actuated SS Jacketed Wafer Ball Valves



All of our actuators are typically 3 wire actuators, offering a neutral and switchable live. See below for specific wiring options. Call if you have a specific requirement as in particular the Sun Yeh and AVA brands have multiple factory made options available. For example, the AVA units are available as a 2 wire option where replacing a solenoid valve for example.

Wiring Options:- AVA Series

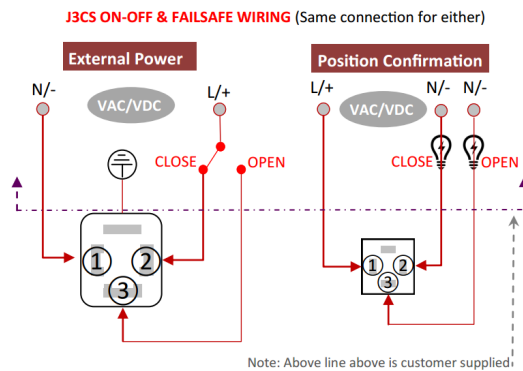


AVA electric actuators are supplied with a flying lead, models 20 only. Models 60 and above have terminal strip. No need to remove actuator housing to wire. See specific actuator model for exact wiring details.



TYPE: 910E ELECTRIC

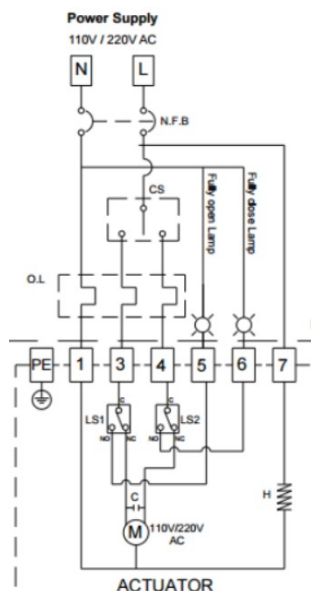
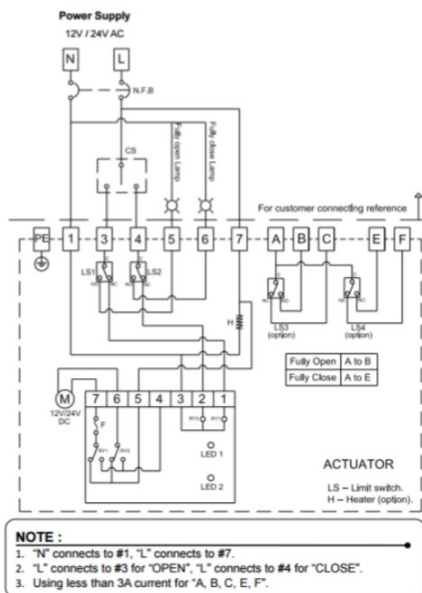
Wiring Options:- J+J Series



In J+J electric actuators, all electrical connections are made externally using the external DIN plugs supplied with the actuator. There is no need to remove the valve actuator's cover to connect electrically. See specific actuator model for exact wiring details.



Wiring Options:- Sun Yeh Series



The Sun Yeh range of actuators requires the cover to be removed to wire the actuator electrically. All actuators from our stock have M20 conduit entry for cables (glands not included). See specific actuator model for exact wiring details.



ISO 9001:2015 Accredited Company

Tel: +44(0)1386 552369

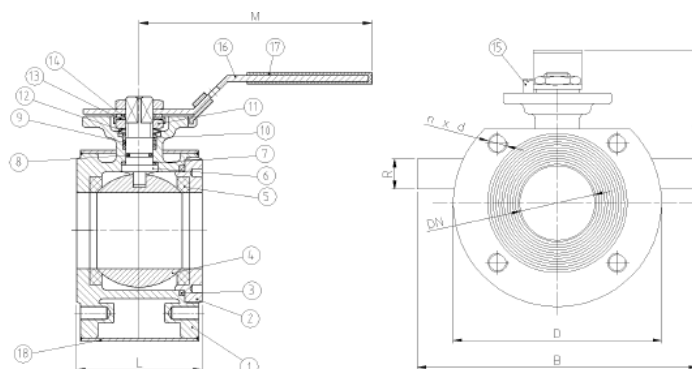
Fax: +44(0)1386 554227

sales@allvalves.co.uk

www.allvalves.co.uk

Allvalves Online Ltd, Automation House, Unit 2, Pershore, WR10 2DF UK

Valve Additional Information:-



TYPE: 910E ELECTRIC

Nº	Denominación / Name	Material	Acabado Superficial / Surface Treatment	Cód. Recambio Spare Part Code
1	Cuerpo / Body	Acero Inox. / Stainless Steel 1.4408	Decapado / Shot Blasting + Pickling	-----
2	Tapón / Plug	Acero Inox. / Stainless Steel 1.4408	Decapado / Shot Blasting + Pickling	-----
3*	Juntas / Gasket	PTFE	-----	2818
4	Bola / Ball	Acero Inox. / Stainless Steel 1.4408	-----	-----
5*	Asiento / Ball Seat	PTFE + 15 % F.V. / PTFE + 15 % FG	-----	2818
6	Eje / Stem	Acero Inox. AISI 316 / SS 316	-----	-----
7*	Arandela / Thrust Washer	PTFE	-----	2818
8*	Tórica / O-ring	FKM (Viton)	-----	2818
9*	Empaquetadura / Packing	PTFE	-----	2818
10	Prensa / Gland	Acero Inox AISI 304 / S.S. 304	-----	-----
11	Tuerca / Nut	Acero Inox AISI 304 / S.S. 304	-----	-----
12	Arandela Resorte / Spring washer	Acero Inox AISI 304 / S.S. 304	-----	-----
13	Antigiro / Lock Washer	Acero Inox AISI 304 / S.S. 304	-----	-----

14	Arandela / Washer	Acero Inox AISI 304 / S.S. 304	-----	-----
15	Tope / Stop Pin	Acero Inox AISI 304 / S.S. 304	-----	-----
16	Maneta / Handle	Acero Inox AISI 304 / S.S. 304	-----	-----
17	Funda / Plastic Cover	Vynil	-----	-----
18	Camisa / Jacket	Acero Inox AISI 304 / S.S. 304	-----	-----

* Piezas de recambio disponibles / Available spare parts