

Actuation Centre - Actuated Valves Series 904P

Stainless Steel 2pc Threaded Pneumatic Actuated



Main Features :-

Full bore	Available with single acting
Stainless Steel CF8M	Double acting actuator
Available NPT option	Switchbox
RPTFE seats and Viton seals	Solenoid
ISO 7 BSP thread	Electro pneumatic positioner
1/2" to 2"	Assembled and Tested
Direct Mount	8 bar rated



TYPE: 904P PNEUMATIC

Technical Specifications and Key Dimensions:

Specifications:	
Actuator housing:	Hard anodised aluminium
Actuator ATEX rating:	ATEX II 2GD EExd
Actuator Temp rating:	-20 +80C
Actuator pressure rating:	8 bar Max
Valve Approval:	None
Valve ends available:	ISO 7 BSP thread
Size range:	1/4" to 2"
Valve temp limits:	-25 to +180C
Valve pressure limits:	63 bar at ambient temperature

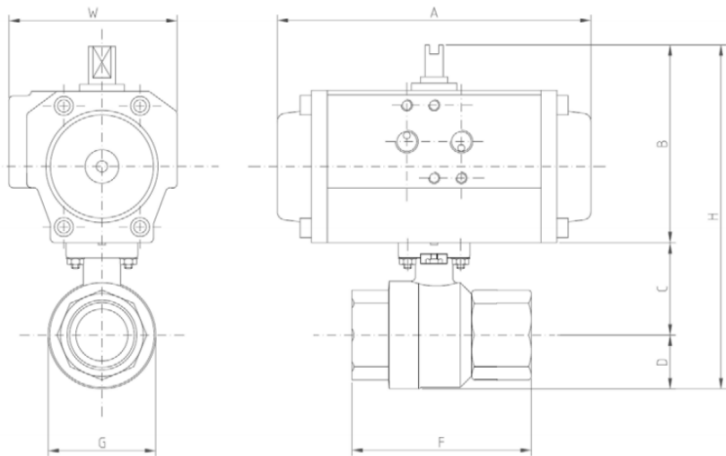
Assembly Overview:-

A cost effective pneumatically operated stainless ball valve available in double acting (air to open air to close) or single acting (failsafe, air to open spring to close). RPTFE seals make this valve suitable for a wide variety of applications. An all round good quality valve.

Don't forget your Switchboxes and / or Solenoid valve accessories.



Brands of 2pc we can offer:



Size	Double Acting		Single Acting	
	E	H	E	H
1/4"	50	134	50	134
3/8"	50	134	50	134
1/2"	55	135	55	135
3/4"	70.5	142	70.5	142
1"	83	142	83	142
1 1/4"	91	176	91	176
1 1/2"	103	182	103	194
2"	120.5	188	120.5	208

Did you know?

We can offer the above assembly with a stainless mounting kit for temperature applications above 70+C. Note this typically adds 50-70mm to the overall height of the assembly - dimension H above.

ISO 9001:2015 Accredited Company

Tel: +44(0)1386 552369 Fax: +44(0)1386 554227 sales@allvalves.co.uk www.allvalves.co.uk

Allvalves Online Ltd, Automation House, Unit 2, Pershore, WR10 2DF UK

*Please note that all datasheet are generally generic and are subject to change without prior notice. They are for reference only.