

Main Features :-

Full bore ball valve	Available with single acting
PVC valves	Double acting actuator
FIP/GF option in ABS, CPVC, PP	Switchbox
EPDM or FPM (Viton) Seals	Solenoid
Imperial or Metric plain ends	Electro pneumatic positioner
1/2" to 3" (3" reduced bore)	Assembled and Tested
BSP female ends option	8 bar rated



TYPE: 944P PNEUMATIC

Technical Specifications and Key Dimensions:

Specifications:	
Actuator housing:	Hard anodised aluminium
Actuator ATEX rating:	ATEX II 2GD EExd
Actuator Temp rating:	-20 +80C
Actuator pressure rating:	8 bar Max
Valve Approval:	FIP valves made of WRAS materials
Valve ends available:	Plain end, BSP or flanged
Size range:	1/2" to 3"
Valve temp limits:	-10 to +60C
Valve pressure limits:	16 bar at ambient temperature

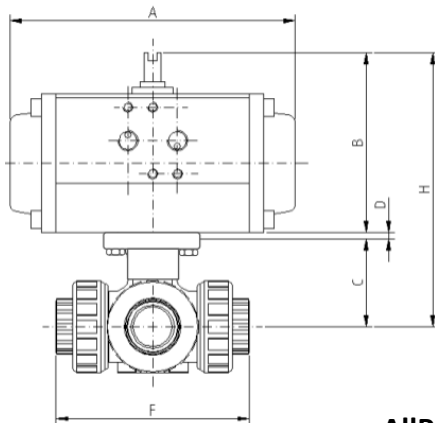
Assembly Overview:-

A cost effective pneumatically operated brass ball valve available in double acting (air to open air to close) or single acting (failsafe, air to open spring to close). Our main range is Hidroten PVC ball valves but we also offer FIP and GF.

Don't forget your Switchboxes and / or Solenoid valve accessories.



Brands in the AllPlastics™ Range:



Size	Double Acting		Single Acting	
	F	H	F	H
1"	162	174	162	174
1 1/2"	210	182	210	182
2"	261	210	261	122
2 1/2"	322	219	322	131
3"	332	238	332	150

*Don't forget we offer pipe and fittings



AllPlastics™ primary offering is Hidroten for 2 way and 2 way and 3 way valves. Above dimensions based on Hidroten. Currently Hidroten only offer 1" to 3" but not 1 1/4". We offer FIP or GF for missing sizes. Note that for ABS, CPVC or PP applications we offer FIP or GF.

ISO 9001:2015 Accredited Company

Tel: +44(0)1386 552369

Fax: +44(0)1386 554227

sales@allvalves.co.uk

www.allvalves.co.uk

Allvalves Online Ltd, Automation House, Unit 2, Pershore, WR10 2DF UK

*Please note that all datasheet are generally generic and are subject to change without prior notice. They are for reference only.