

Industrial Ball Valves - Series 149

Sanitary 2 Way SS 316 Ball Valve Cavity Filled



Main Features :-

Sanitary 3pc Full Bore Ball Valves

TFM1600 Cavity Filled Seats

ISO 5211 Direct Mount

ATEX Approved

Chemically Polished External Surface

Anti Static Device

1/2" to 4"



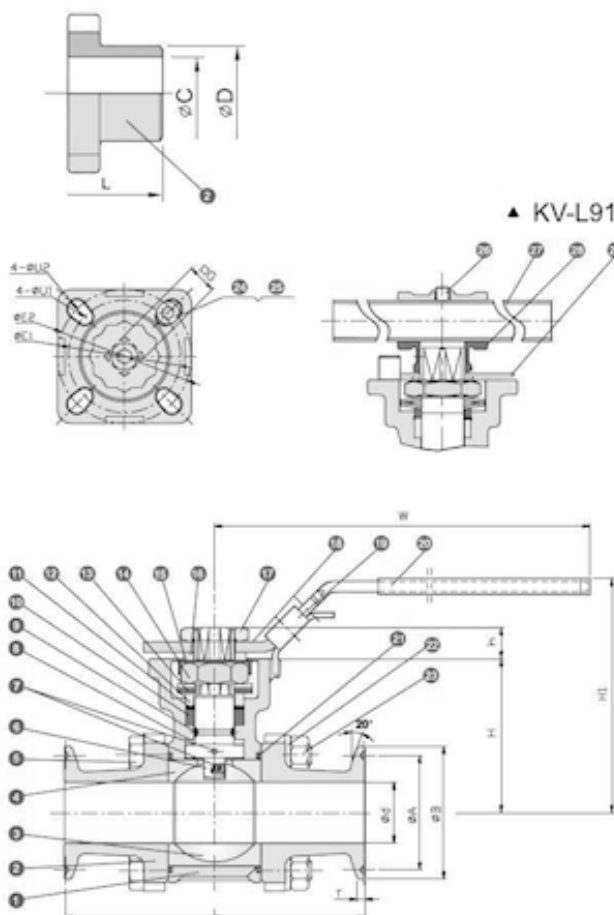
TYPE: STAINLESS STEEL

Additional Technical Specification:-

SPECIFICATIONS:

- Working Pressure: 400 psig (25 Bar) at 38°C (100°F)
- Temperature Range: -29°C to 200°C (-20°F to 392°F)

NO.	PART	MATERIAL		
1	Body	CF3M	CF8M	CF8
2	Cap (Clamp)	CF3M	CF8M	CF8
3	Cap (Welding)	CF3M	CF3M	
4	Ball	CF3M	CF8M	CF8
5	Ball Seat	PTFE / TFM 1600		
6	Bolt	A193-B8		
7	Stem	SUS 316L	SUS 316	SUS 304
8	Anti-Static Devices	SUS 316L	SUS 316	SUS 304
9	Thrust Washer	PTFE		
10	O-Ring	FKM		
11	V-Ring Stem Packing	PTFE		
12	Bushing	50%SS+50%PTFE		
13	Gland	SUS 316		
14	Belleville Washer	SUS 301		
15	Stem Nut	SUS 304		
16	Stop-Lock-Cap	SUS 304		
17	Handle Gland	SUS 304		
18	Handle Nut	A194-8		
19	Handle (1/2-3")	SUS 304		
20	Lock device	SUS 304		
21	Handle Sleeve	Vinyl Plastic		
22	Body Gasket	PTFE		
23	Bolt Washer	SUS 301		
24	Bolt Nut	A194-8		
25	Stop Bolt	A193-B8		
26	Nut	A194-8		
27	Set Screw (4")	SUS 304		
28	Bar Handle (4")	SUS 304		
29	Handle Adapter (4")	SUS 304		
30	Triangle Stopper (4")	SUS 304		



DIMENSIONS		ISO 2852						BS 4825 & BPE																	Unit: mm		
SIZE	DN	φd	φA	φB	φC	φD	φd	φA	φB	φC	φD	L	H	H1	W	T	h	φE1	φE2	G	U1	U2					
1/2"	15	12.7	27.5	34.0	12.7	15.7	9.4	19.1	25.4	9.4	12.7	90	42	69.0	145	2.85	9	36	42	9	6.0	6.0					
3/4"	20	17.2	27.5	34.0	17.2	19.2	15.6	19.1	25.4	15.8	19.1	90	49	76.0	145	2.85	9	36	42	9	6.0	7.0					
1"	25	25.0	43.5	50.5	22.6	25.6	22.3	43.5	50.5	22.1	25.4	100	58	90.0	175	2.85	11	42	50	11	6.0	7.0					
1-1/4"	32	31.8	43.5	50.5	31.8	34.8	27.6	43.5	50.5	-	-	110	63	93.5	175	2.85	11	42	70	11	6.0	9.0					
1-1/2"	40	35.6	43.5	50.5	35.6	38.6	31.8	43.5	50.5	34.8	38.1	125	71	103.0	190	2.85	14	50	70	14	7.0	9.0					
2"	50	48.6	56.5	64.0	48.6	51.6	35.6	56.5	64.0	47.5	50.8	150	78	109.0	190	2.85	14	50	70	14	7.0	9.0					
2-1/2"	65	60.3	70.5	77.5	60.3	64.1	48.6	70.5	77.5	60.2	63.5	190	100	147.0	260	2.85	17	70	102	17	8.5	10.5					
3"	80	72.9	83.5	91.0	72.9	76.7	60.3	83.5	91.0	72.9	76.2	220	109	154.0	260	2.85	17	70	102	17	8.5	10.5					
4"	100	97.6	110.0	119.0	97.6	102.5	72.9	110.0	119.0	97.4	101.6	270	140	205.0	350	2.85	22	-	102	22	-	10.5					

ISO 9001:2015 Accredited Company

Tel: +44(0)1386 552369

Fax: +44(0)1386 554227

sales@allvalves.co.uk

www.allvalves.co.uk

Allvalves Online Ltd, Automation House, Unit 2, Pershore, WR10 2DF UK