



AVOL Model J3-3810 Motorised Ball Valve

Electrically operated 2 way ABS ball valve with kit

Full bore ABS double union ball valve with PTFE seats and EPDM seals (Viton/ FPM option), fitted via stainless steel mounting kit with **J3** electric actuator. Supplied assembled and dry bench function tested. Ends imperial or metric solvent sockets.. UK WRAS approved for use on potable water.

Type	Function
J3-3813	Standard power to open - power to close - Stays put on mains failure
J3-3814	Failsafe BSR - Battery Spring Return - Fails to safe position using an internal battery
J3-3815	Modulating DPS - Digital Positioning System

Applications

ABS is used in many applications such as food and drinks processing as well as water and sewage treatment and many other industries. ABS has good chemical resistance with high impact strength, and has good resistance to most diluted inorganic acids, salts, animal fats and oils, and organic acids. It is not resistant to organic solvents, alcohol, petrol, acetic acid or vegetable oils.

Actuators sized on a maximum differential pressure of 10 bar wet service, if the intended duty is above this differential, or dry (air or gas) call to check actuator sizing as a larger output actuator may be required.

Valve Specifications:

Body	ABS
Ball	ABS
Seats	PTFE with EPDM seals
Pressure rating	UTI 2" 16 Bar, rest 10 Bar
Valve temp limits	-20 to +60°C
Actuator temp limits	-20 to + 70°C



J3 Actuator status light basic function:

Constantly lit LED	The LED flashes with 2 blinks	The LED flashes on/ off
If the actuator is operating correctly with no faults, the LED shows a constantly lit light.	If the actuator has been left in 'manual' mode, the actuator's motor runs but doesn't drive the output shaft. After a pre-set time, the actuator knows that as the torque limiter has not activated and that the motor is running, it is in manual.	When the actuator senses an impending valve jam, the electronic torque limiter is activated and on activation, repeatedly flashes the LED on and off.



Quick guide to the J3 electric actuator standard features :

Highly visible LED light gives continuous actuator status indication.

J3 L - 12-24V AC/DC
J3 H - 80-240V AC/DC

Multi-voltage capable with auto-voltage sensing:

Torque output: range:
25~95Nm Break
20~80Nm Reseat

Electronic torque limiter
Protects against valve jams

Anti-condensation heater

Manual override

All connections via external DIN plugs ~ no need to remove cover to connect

Volt free end of travel confirmation switches

IP65 weatherproof housing

CE marked

Traceable sequential serial numbering system

Optional failsafe kit (Battery Back-up) - actuator fails to safe position on power failure

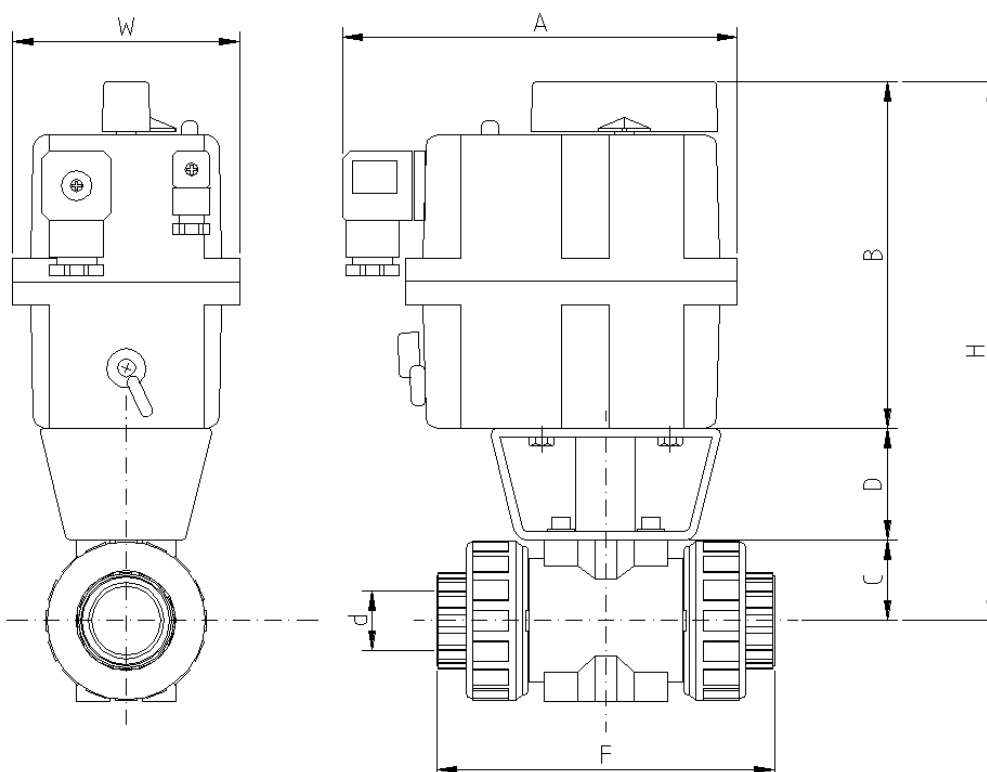
Optional modulating kit with digital positioning system, either 0-10V or 4-20mA



AVOL Model J3-3810

DIMENSIONS

Electrically operated ABS ball valve with kit - Dimensions (to nearest mm)



Dimensions remain unchanged for all versions (on-off, failsafe & modulating)										
Imperial Valve size 'd'	Model	A	B	C	D	F	H	W	Kilos	Metric pipe OD mm/ bore 'd'
1/2"	20	177	149	25	50	102	224	110	1.9	20 / 15
3/4"	20	177	149	30	50	120	229	110	1.9	25 / 20
1"	20	177	149	34	50	128	233	110	2.0	32 / 25
1 1/4"	20	177	149	40	50	147	239	110	2.2	40 / 32
1 1/2"	20	177	149	48	50	163	247	110	2.4	50 / 40
2"	20	177	149	58	50	197	257	110	2.9	63 / 50
2 1/2"	35	177	171	73	70	214	571	110	3.8	75 / 65
3"	55	177	196	83	70	241	349	110	5.3	90 / 80
4"	85	177	196	105	70	281	371	128	7.2	110 / 90

Subject to alteration without notice. Uncontrolled copy, not subject to automatic updates