



# AVOL Model J3-4910 Motorised Cast Iron Ball Valve

## Electrically operated 3 way cast iron PN16 flanged ball valve

Full bore 3 way cast iron ball valve, flanged PN16, designed for automation with integrally cast ISO5211 actuator mounting platform fitted via mounting kit with a **J3** electric actuator. Supplied assembled and dry bench function tested. Size range from 2" to 4".

### Code

### Function

- J3-4913** Standard power to open - power to close  
- Stays put on mains failure
- J3-4914** Failsafe BSR - Battery Spring Return  
- Fails to safe position using an internal battery
- J3-4915** Modulating DPS - Digital Positioning System



### Applications

Water, oil and other medias, subject to compatibility with wetted parts in contact with media.

Actuators sized on a maximum differential pressure of 10 bar wet service, if the intended duty is above this differential, or dry (air or gas) call to check actuator sizing as a larger output actuator may be required.

Maximum working temperature of assembly is +130C. If the intended duty is a higher temperature than this, contact us to discuss options.

Remember to advise required flow pattern when ordering.

### Valve Specification

Body	Cast iron
Ball	Cast iron
Seats	PTFE
Pressure rating	PN16
Valve temp limits	-20 to +200°C
Actuator temp limits	-20 to + 70°C

### 3 Way ball valves – flow patterns:



L Port – diverting



T Port – mixing



T Port – diverting

### J3 Actuator status light basic function:

#### Constantly lit LED

If the actuator is operating correctly with no faults, the LED shows a constantly lit light.

#### The LED flashes with 2 blinks

If the actuator has been left in 'manual' mode, the actuator's motor runs but doesn't drive the output shaft. After a pre-set time, the actuator knows that as the torque limiter has not activated and that the motor is running, it is in manual.

#### The LED flashes on/ off

When the actuator senses an impending valve jam, the electronic torque limiter is activated and on activation, repeatedly flashes the LED on and off.



### Quick guide to the **J3** electric actuator standard features :

Highly visible LED light gives continuous actuator status indication.

**J3** L - 12-24V AC/DC

**J3** H - 80-240V AC/DC

Multi-voltage capable with auto-voltage sensing:

Torque output: range:  
25~95Nm Break  
20~80Nm Reseat

Electronic torque limiter  
Protects against valve jams

Anti-condensation heater

Manual override

All connections via external DIN plugs ~ no need to remove cover to connect

Volt free end of travel confirmation switches

IP65 weatherproof housing

CE marked

Traceable sequential serial numbering system

Optional failsafe kit (Battery Back-up) - actuator fails to safe position on power failure

Optional modulating kit with digital positioning system, either 0-10V or 4-20mA

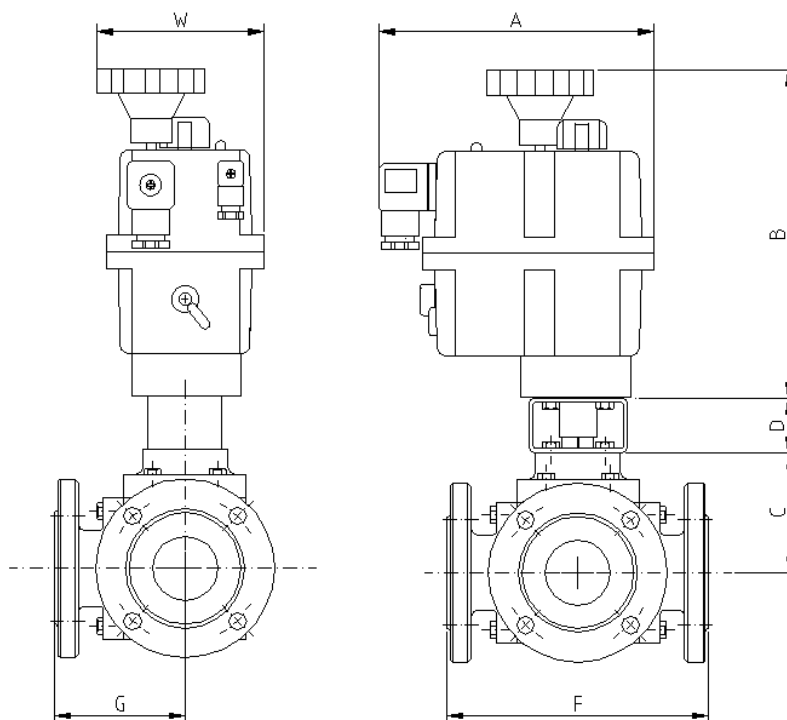


## ACTUATED VALVES

# AVOL Model J3-4910

## DIMENSIONS

Electrically operated PN16 flanged cast iron 3 way ball valve with kit - Dimensions (to nearest mm)



Dimensions remain unchanged for all versions (on-off, failsafe & modulating)

	Model	A	B	C	E	F	G	H	W	Kilos
2"	55	177	196	84	50	220	110	331	110	19.2
2 1/2"	85	177	196	85	50	250	125	331	110	31.0
3"	J2-140	235	254	125	70	260	130	429	214	35.2
4"	J2-300	235	254	125	70	275	170	439	214	51.2