



ALLVALVES SERIES 163/164 - PN16 CAST IRON 3WAY VALVES

www.allvalves.co.uk

TYPE AVOL: 163-164 SERIES

All Valves offer a range of Cast Iron 3 way ball valves in L port or T port with full bore and PN16 flanges. Suitable for manual operation or electrically or pneumatically actuated options. Most used in refrigeration or agricultural applications.

Flanged PN16, Full Bore, Cast Iron Body, Stainless Steel Ball & Stem, T-Port or L-Port, PTFE Seats, Lever Operated

Pressure/Temperature Ratings

Max Pressure	16 Bar
Temperature	-10°C to 120°C

Material List

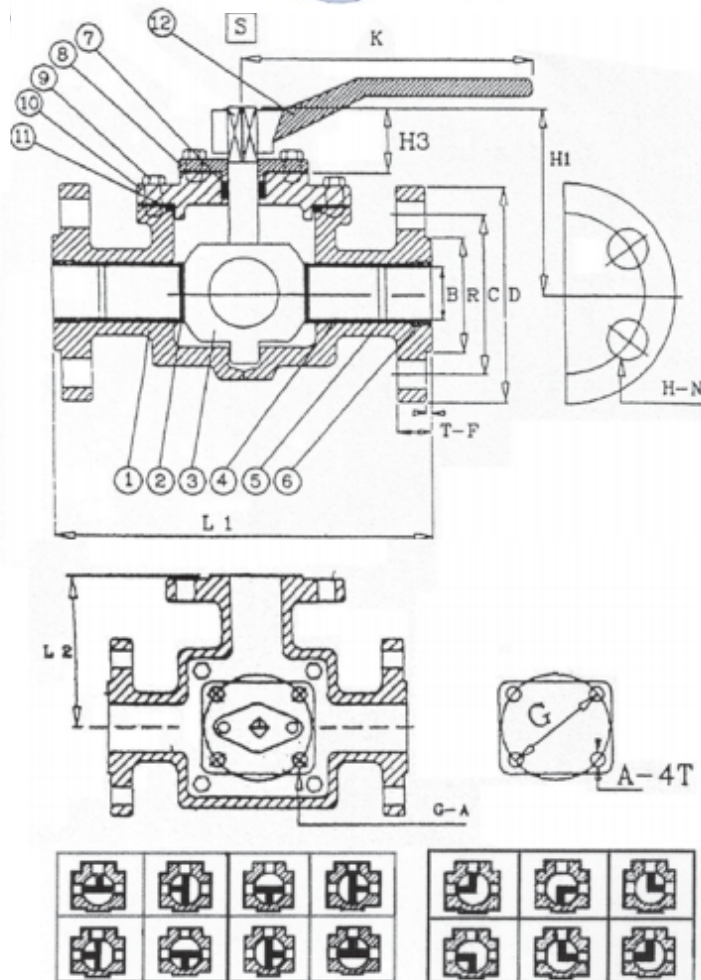
1	Body	Cast Iron
2	Ball Seat	Teflon
3	Ball with Stem	CF8
4	Seat Ring Holder	Cast Iron
5	O-Ring	PTFE
6	Retainer	Cast Iron
7	Stem Packing	Teflon
8	Gland Flanged	Cast Iron
9	Gland Bolt	SS 41
10	Top Cover	Cast Iron
11	Joint Gasket	Teflon
12	Handle	Cast Iron

Torque (Breakaway) without Safety

50mm	29.4 Nm
65mm	48.02 Nm
80mm	70.56 Nm
100mm	94.06 Nm
125mm	318.6 Nm
150mm	382.2 Nm

Dimension List PN16 DIN-3202

Valve Size	mm	inch	L1	L2	B	D	T	R	F	C	H	N	H1	H3 FC	H3 304	K	S	A	G	Kg T	Kg L
50	2"		220	110	47	165	18	102	2	125	18	4	136	46	53	230	16	M10	70	18	18.5
65	2½"		250	125	63	185	18	122	2	145	18	4	150	55	65	330	19.5	M10	102	28	29
80	3"		260	130	74	200	20	138	2	160	18	8	160	60	65	330	19.5	M10	102	29	31
100	4"		340	170	97	220	20	158	2	180	18	8	172	60	65	330	19.5	M10	102	47	49
125	5"		424	212	123	250	22	188	2	210	18	8	220	65	70	700	25	M12	125	86	89
150	6"		435	217	144	285	22	212	2	240	22	8	240	65	75	700	25	M12	125	103	105



Tel: 01386 552369

Fax: 01386 554227

sales@allvalves.co.uk

Allvalves Online Ltd, Automation House, Unit 2, Pershore, WR10 2DF UK