

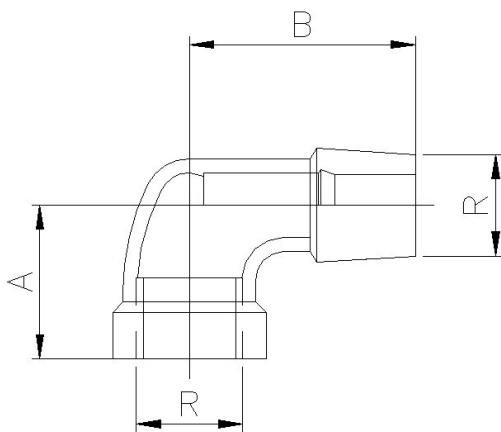


316 STAINLESS STEEL 150LB FITTINGS

GENEBRE PART: 0092 90° M x F ELBOW BSP



SPECIFICATIONS	
1	Material AISI 316 (cast)
2	Thread according to DIN 2999
3	Max working pressure 20 BAR (S-150)
4	Temperature range -20°C to + 220°C



90° STREET ELBOW (M x F)			
REF	SIZE R mm	A mm	B mm
0092 02	1/4"	19	27
0092 03	3/8"	23	30
0092 04	1/2"	27	35
0092 05	3/4"	33	41
0092 06	1"	38	50
0092 07	1 1/4"	45	56
0092 08	1 1/2"	50	61
0092 09	2"	57	72
0092 10	2 1/2"	69	87
0092 11	3"	79	96
0092 12	4"	97	116