



TYPE HIDROTEN: 942/943

All Valves Online strength is its actuated valve range. The Hidroten bi directional ball valve is available with electric or pneumatic actuator and this datasheet covers both. We can offer from 1/2" through to 4" from stock with metric or imperial ends. Our electric actuators are available as on/off, modulating or failsafe and our pneumatic actuators are available as single acting or double acting with accessories.



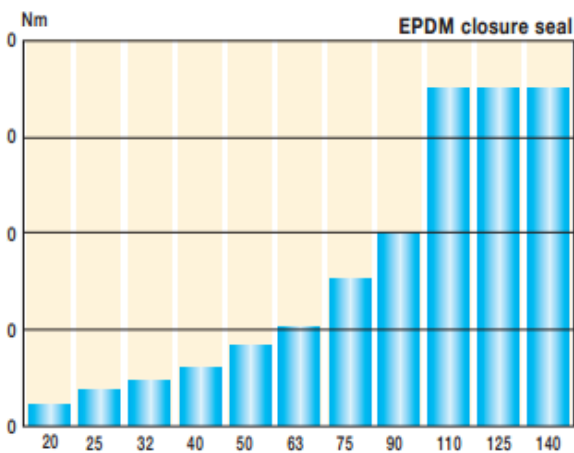
Specifications:

1	Full bore ball valves
2	1/2" to 4" in PVC
3	EPDM or Viton seals
4	Available with J+J actuator, Sun Yeh or AVA actuators
5	Available with Haitima pneumatic actuator
6	Available with switchbox, solenoid or positioner
7	Actuated in house supplied ready to install
8	Available in metric or imperial, plain end or BSP from stock.

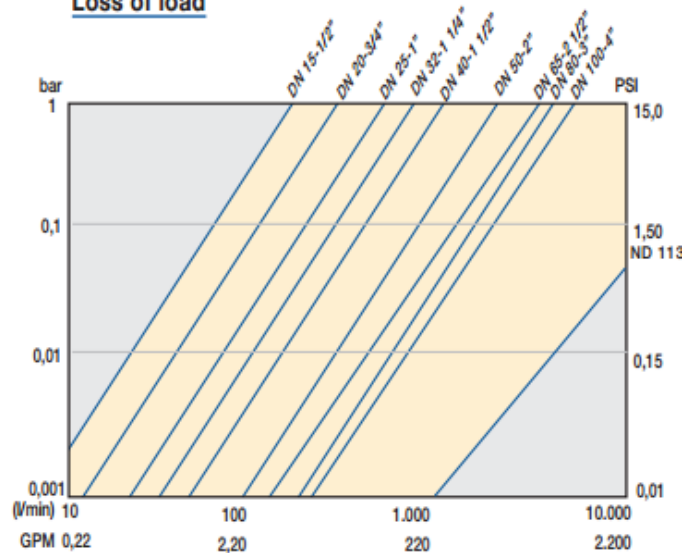
Nominal Pressure:

Ø 20 to 63	PN = 16 bar.	232 psi
Ø 75 to 140	PN = 10 bar.	145 psi

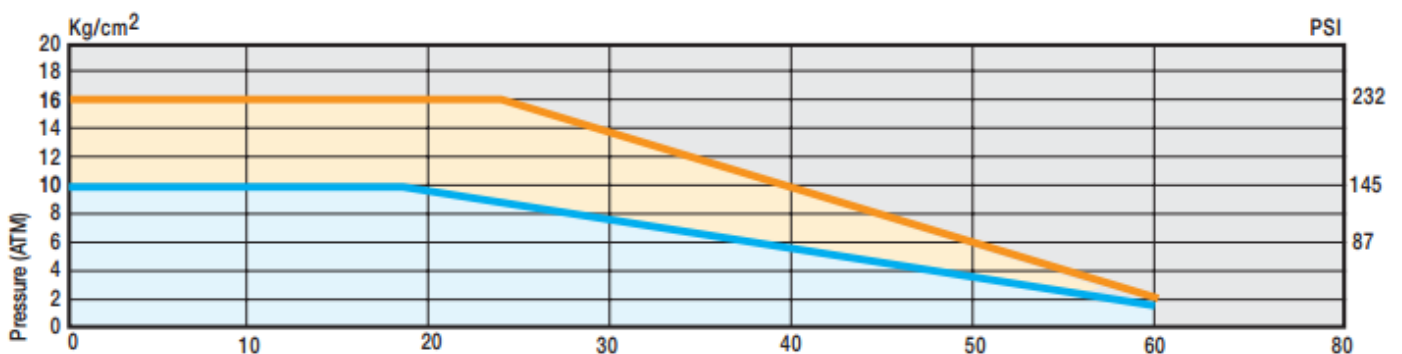
Torque at maximum pressure of service



Loss of load

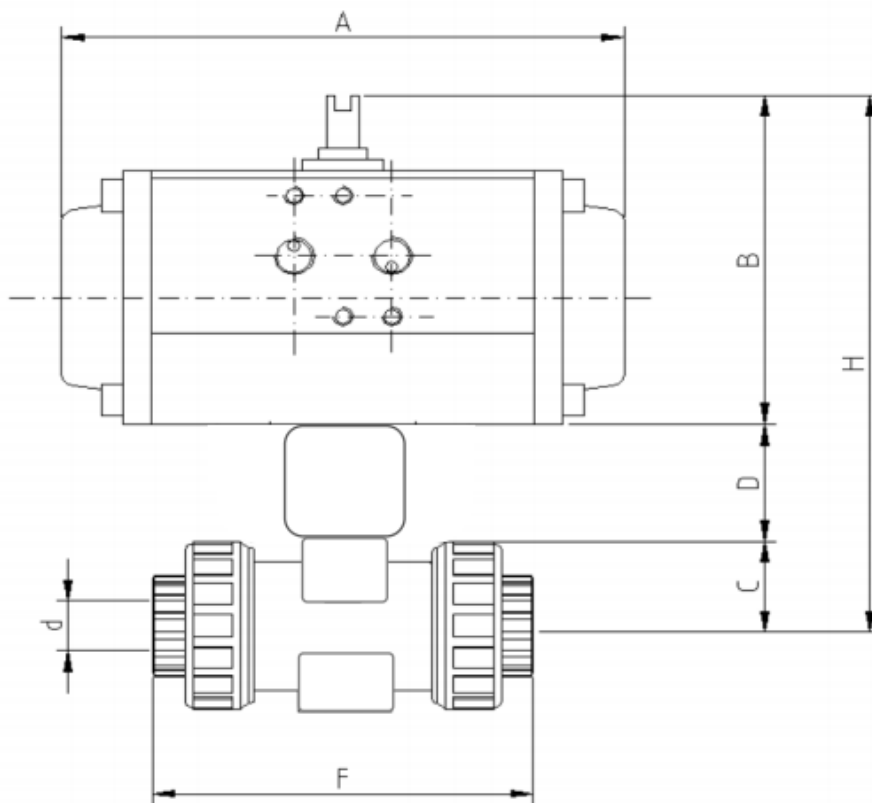


Pressure/ Temperature





TYPE HIDROTEN: 11000



Size 'd' (imperial)	Size 'd' (metric OD)	CH-air A Model No	A	B	C	D	H	F
1/2"	D20 DN15	DA 42 SR 42SR	DA 160 SR 160	DA 57 SR 57	25	29	DA 111 SR 111	86
3/4"	D25 DN20	DA 42 SR 42SR	DA 160 SR 160	DA 57 SR 57	29	29	DA 115 SR 115	94
1"	D32 DN25	DA 42 SR 50SR	DA 160 SR 138	DA 57 SR 67	34	29	DA 120 SR 130	122
1 1/4"	D40 DN32	DA 42 SR 50SR	DA 160 SR 138	DA 57 SR 67	42	29	DA 128 SR 138	131
1 1/2"	D50 DN40	DA 42 SR 63SR	DA 160 SR 156	DA 57 SR 83	49	29	DA 135 SR 161	150
2"	D63 DN50	DA 50 SR 75SR	DA 138 SR 210	DA 67 SR 100	58	29	DA 144 SR 187	177
2 1/2"	D75 DN65	DA 50 SR 75SR	DA 138 SR 210	DA 67 SR 100	75	0	DA 142 SR 175	216
3"	D90 DN80	DA 75 SR 85SR	DA 210 SR 228	DA 100 SR 110	81	0	DA 181 SR 191	
4"	D110 D100	DA 75 SR 85SR	DA 210 SR 228	DA 100 SR 110	89	0	DA 189 SR 214	

Pneumatic actuator model shown is CHA type however call for actual dimensions and model numbers as this may vary depending on available stocks we have.